



# Community Newsletter

## SHANNON SCHOOL

Thursday 13th December 2018



Grey Street Shannon Ph: 06 3627866  
Text your absences: 027 7555591  
Email: [office@shannon.school.nz](mailto:office@shannon.school.nz)  
Website: [www.shannon.school.nz](http://www.shannon.school.nz)  
Facebook: Shannon School Te Kura o Hanana



## Principal's Voice



Dear Parents/Carers/Community Members

### Future Learning

With our new government we no longer have to focus on a narrow curriculum and an obsession with measuring success from each child's very early age. In this new era we again have the freedom to rethink what learning experiences we want to provide for our young learners. We have just held our well-attended interactive Strategic Planning Evening that highlighted many of the decisions we will be making as a school. It was great to have so many community members, various age groups, and a wide range of attendees, involved in dialogue about what is most important for our school. Following on from this we will be holding a hui in term 1 or 2 to discuss our local Shannon School curriculum priorities. Once again this will be well advertised and anyone from our Shannon community is most welcome to attend. School is already quite different to when you or I attended and needs to cater for an ever-changing world. As usual we welcome anyone to visit the school and see 'learning in action.'

### Learning Needs

We are constantly assessing our tamariki as to their learning. One of the very obvious observations is that, when children have support and a keen interest of parents in their child's learning, the children succeed at or above age expected learning levels. *This requires adults to talk with children, ask questions, read with them, encourage them to play outdoors, show an interest in their learning.* Generally we are now finding in NZ schools many children who do not have enough good oral language and are behind in their overall development when starting Early Childhood Centres and Schools. Many children are being brought up with constant supervision by digital devices instead of by active parenting.

One of the other aspects that assists children in their learning is regular attendance at school. Children need to be at school before the day starts (8.55am) and finish at 3pm. Changing times, and time off school, can be very unsettling for children and does disrupt their learning. It is illegal for children to be truant from school.

### Kāhui Ako - Community of Learning

As Lead Principal of the Kerekere Community of Learning (and Co-Leader with Moira Howard Campbell - Taitoko CoL) and joint leader of the Horowhenua Kāhui Ako, I have been very pleased with the steady progress we have made over the 2018 year in developing greater levels of collaboration between all our schools. We are facilitating the sharing of best practice across our region that will ultimately benefit all our tamariki. Our 2019 HCoL Goals are:

- To create seamless pathways for students
- To develop and sustain culturally responsive best practice
- To support holistic wellbeing



We are sad to see our parent-led Shannon PreSchool close but also excited by the prospect of working closely with its change to Whānau Manaaki - Kindergarten. As a school we are looking forward to a closer working relationship with all of our local Early Childhood providers - the Shannon Playcentre, Kōhanga Reo and Kindy. The transition from ECE to school is also a priority of the HCoL. The Horowhenua Early Childhood Centres are all presently involved in forming their own Community of Learners. We envisage that their ECE CoL will join the HCoL in the near future.

### **Staffing & Support**

Our staffing for next year is the same as for this year. A special thanks to Kristin Reilly who returned from her stint in England to work with us this past term. Congratulation to Kristin who has won a teaching position at another local school. I would like to thank all staff who work over-and-above their job descriptions to provide engaging and meaningful programmes of learning for our tamariki. I do not know of another local school who provides such personalised and unique learning opportunities. A very special thanks to all those who have supported our school over the past year - parents, community members, reading tutors, board members. An exceptional supporter of the school is Kath Irvine who regularly comes from outside our community to oversee and work tirelessly in our school gardens. Thanks Kath and Judith for your amazing garden support.

### **Digital Communication**

Most of our communication is now done digitally instead of in regular paper newsletters. This Community Newsletter, sent out at the end of each term, will continue in its present form. If you wish to sign up to our regular newsletters and newsnotes please complete the application on our School Web site - [www.shannon.school.nz](http://www.shannon.school.nz) (What's On - Newsletters), or refer to our digital news published regularly on our Facebook site - [Shannon School Te Kura o Hanana](#) or contact the school office. Our website does provide comprehensive information on the school e.g. staffing, stationery lists, personnel, documents.

Have a wonderful festive season and new year

Meri Kirihimete  
Ngā mihi  
Murray Powell

## Board of Trustees



### **Tena tatou katoa**

As the end of 2018 nears we reflect on an action packed year and notice there is much to be grateful for within our School. On behalf of the board we want to first acknowledge each and every child we are blessed to have at Shannon School. You all give meaning to what we are working to achieve as a School and each of you in your own way make us proud everyday.

*"Kia Mau te Puawaitanga o to Mana" - "Nurturing the Mana of the learner"*

We wish to thank and acknowledge the over and above wonderful work of all our staff. We have a dedicated team working hard everyday to provide the best learning opportunities for our tamariki. May the government react and give to our Educators what they deserve and may you all have a blessed christmas holiday with your whanau.

It has been amazing to watch the impact of Pā Waere Te Peeti and his Te Reo and tikanga programmes within the school. The improvement in Māori throughout the kura has been awesome to watch. To see Māori interwoven in the daily learning has created a lift in kotahitanga throughout the kura and for our tamariki. We are so thankful to have Pa on board.

### **Strategic Planning**

A big thank you to everyone that attended the schools strategic planning evening it was a great turnout with a diverse range of age groups and backgrounds. We gathered the valuable data which is included in this newsletter, please feel free to contact anyone from the Board to discuss anything further. We do have a draft plan and will be asking the community and staff to feedback before finalising this Strategic Plan.

### **Board of Trustees Elections 2019**

The Board wishes to thank William Bryant for all his years of service to Shannon School as a Parent Helper and Trustee. It has been great learning and growing on this journey with you Bill and we wish you all the best with future endeavours. Coming up next year is the Board of Trustees elections and we encourage everyone that is interested in standing for the Board to leave your name at the school office.

### **Shannon Preschool**

We are very excited to be receiving a koha aroha from the Shannon Preschool. They are sponsoring the school an Archgola for the junior area which is due to be installed over the christmas break. Having a shelter to cover the deck area will enhance the learning opportunities during summer and winter. Ka nui te mihi kia koutou.

### **Funding Officer**

We believe there are funding opportunities out there to support our learners. The Board is seeking a person or people who have the time to explore and apply for funding initiatives for the school. Please get in touch with any of the Board members or leave your name at the office.

Finally, on behalf of the Board we wish our amazing Year 8 students all the best for secondary school next year. May you all go forward with pride-whakamana, courage-hautoa, caring-manaaki, effort-kaha and unity-kotahitanga.

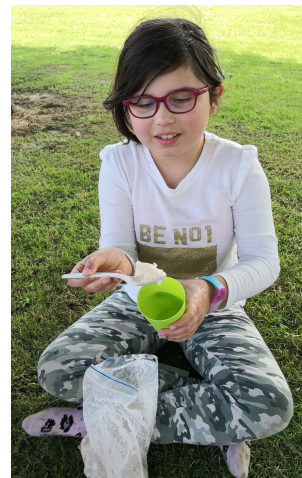
Nga manaakitanga o te Runga rawa

Rhea Hyde

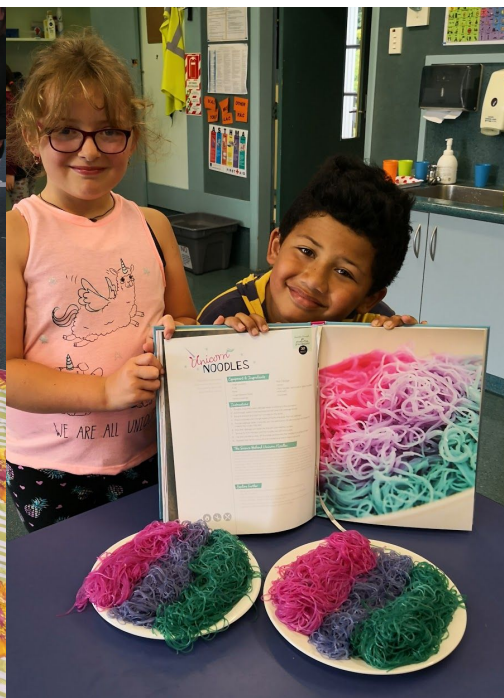
## Te Rito Hub

This term we have been learning about "Sustainability". We visited Lewis' Asparagus Farm and Woodhaven Gardens where we saw gardening on a massive scale. Thank you to both places for allowing us to visit.

Back at school we did some kitchen science experiments. We made "Unicorn Noodles". The rice noodles were cooked in water in which we had cooked a



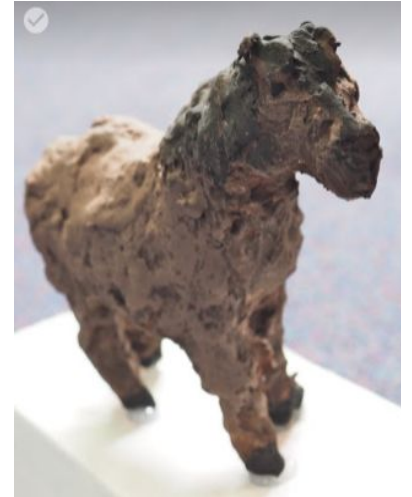
red cabbage. This turned the noodles purple. Baking soda and lemon juice were used to see how the colour changed - from acidic (pink) to alkaline (green/turquoise). Thank you to "The Kitchen Science Book" from Nanogirl Labs Project.



On another day we had a fantastic time making "Ice Cream" and then eating it. We put ice and salt in a big bag then in a small bag we put cream, milk, sugar and flavour. This small bag went inside the bag of ice and then we shook it for 5 minutes!! We sat under the trees and had an "Ice cream Picnic"! Yum, yum!! Big thanks to School Kit and Dairy NZ who provided all the ingredients and equipment we needed.



# Harakeke Hub 2018



We have had such a busy year in the Harakeke Hub! These are some of the art pieces we created for our Pet Day in week 4 this term. We have some wonderfully talented artists in our hub working with a range of different media! We have also had many of our learners participating in sports this term. Our Senior netball team placed third this year in the Kerekere competition. Special thanks to our parents who were amazing help this year!



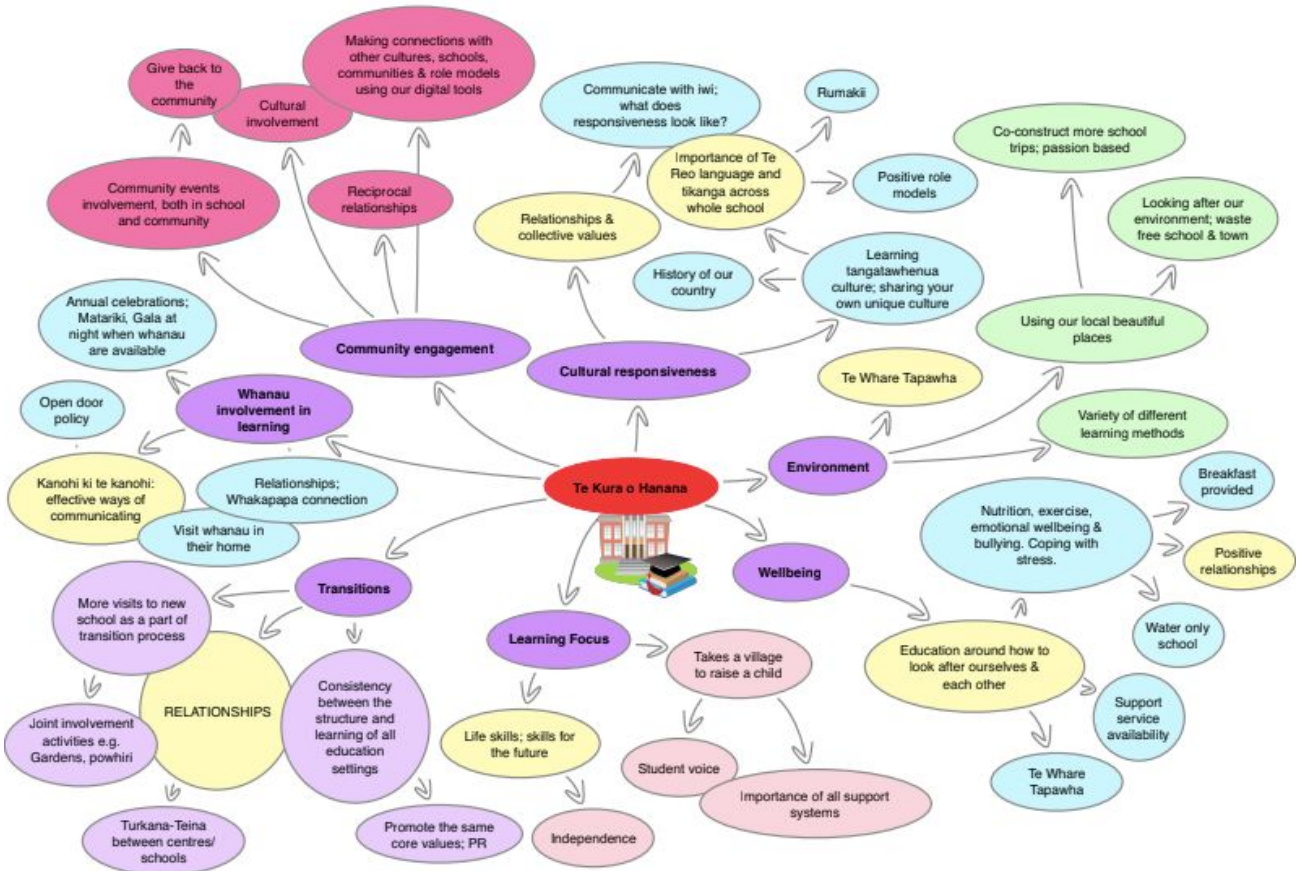


# Farewell to our 2018 Year 8's



We are sad to farewell our Year 8 learners from Shannon School. We wish you all the very best for high school. We know you will do us proud!!

Below is a copy of our strategic plan mind map that we planned as a community on our shared Strategic Planning Evening in week 6. If you would like any more copies, feel free to see the school office or download from our Facebook page.





## OFFICE NOTICES

### SHANNON SCHOOL POOL - SCHOOL HOLIDAY HOURS

Our School Pool will be run and maintained by HDC staff over the school summer holidays. It will be open from 3pm this Thursday, 13th December until 6.00pm.

Then it will be open each day from 1.00pm - 6.00pm, weather permitting.

It will also be closed at short notice if there is staff working on site for any reason or accidents in the pool. This will be advertised asap on social media.

We wish to keep our pool in good condition, please report any after hours activity to the Police. The pool will be closed on Christmas Day.

The cost is \$1 for children and \$2 for adults.

**SHANNON**  
**CHRISTMAS**  
FEATURING  
Santa & Local Floats  
**CARNIVAL**  
10AM to 3PM

**FREE**

- Santa's Magical Cave
- GIFTS for ALL children 8yrs & under
- Barrell Train Rides &
- Bouncy Castles
- Face Painting

**STALLS**

- ALL day entertainment stage
- Food Stalls
- Arts & Crafts
- Fun games with youth
- Petting Zoo and more...

CONTACT - Nina Pilkington (022) 105 4254 SHANNON DOMAIN  
**SUNDAY 16th DECEMBER 2018**

### FREE PARENTING HELPLINE

0800 568 856

all issues - all ages  
9am - 9pm, 7 days a week

[www.parenthelp.org.nz](http://www.parenthelp.org.nz)



Farm Source  
25 Stafford Street,  
Shannon  
Ph: 3629000  
[www.farmsource.com](http://www.farmsource.com)  
At Farm Source,  
everyone is  
welcome. Plus, no  
joining fee!

Thanks to the team at CSG  
Palmerston North for printing  
our newsletters!



Shannon Four Square  
Available Daily  
Kools Chicken & Chips  
Fresh Homemade Pies  
Lotto  
Ph: 3627876



Highway 57 Bakery & Cafe

Open 7 Days Ph: 06 3627820  
6 Ballance Street, Shannon  
Coffee by Robert Harris



### P. B. MOTORS (1993) LTD.

Proprietor: KIRIT & STEVEN  
45 Ballance Street, SHANNON  
Phone/Fax: 06 362-7403  
After Hours Mobile: 0210 252 9814



Motor Trade Association (Inc)

ALLIED SERVICE STATION  
Petrol Diesel L.P.G. Full Workshop Service  
Tyres Batteries Accessories

TOWING  
**24**  
HOUR  
SALVAGE

**AA**  
BREAKDOWN  
SERVICE

### CITY HONDA

ROAD | FARM | DIRT | OUTDOOR POWER



**MANAWATU**  
06 357 7027

**HOROWHENUA**  
06 362 7233